



Wearable Health Solutions, Inc.

Ticker: (OTC:WHSI)

Updated Corporate Profile

Page 1 of 10

as of October 16, 2021

Sector: Healthcare
Industry: Medical Instruments

www.wearablehealthsolutions.com

COMPANY BACKGROUND

Wearable Health Solutions, Inc. (the "Company" or "WHSI"), formerly known as Medical Alarm Concepts Holdings Inc., headquartered in Toronto, Canada with satellite U.S. offices in King of Prussia, PA, Syracuse, and Westchester County, NY and Orlando, FL, is a personal monitoring technology developer focused on mobile alert and tracking devices for emergency medical and occupational safety markets worldwide, concentrating on North American markets. Incorporated under Nevada laws in July 2008 and operating primarily through its wholly-owned Pennsylvania-registered subsidiary, Medical Alarm Concepts LLC, the Company (www.wearablehealthsolutions.com) has over the years introduced several generations of cutting-edge Personal Emergency Response System ("PERS") solutions, ranging from at-home medical alarms called MediPendant® (www.MediPendant.com), designed mainly for independently-living seniors, to advanced mobile-alert smart-devices branded iHelp™ (www.ihelpalarm.com), which have also been recently marketed as employee check-in and safety trackers for lone field workers.

WHSI generates revenues from sale of its PERS devices and recurring service fees based on monitoring subscription plans. In addition to the U.S. and Canada, which contribute a vast majority of the Company's business volume, WHSI has also in the past sold its solutions practically across all continents, including countries such as New Zealand, Denmark, Ireland, Brazil, Barbados, Bermuda and the People's Republic of China. Unlike the majority of existing PERS companies, the Company's products are distributed predominantly on a wholesale basis to dealers consisting mainly of residential security companies, home healthcare providers and rehabilitation centers, and to retail customers through mass outlet chains or direct in-house sales channels. Working with more than 15 central monitoring stations and approximately 200 dealers, WHSI reported serving over 8,000 end-users as of June 2021 and filling an order book of 2,000+ potential activations.

Fueled by rapidly-growing world-wide geriatric populations, especially in developed countries targeted by WHSI, and technology-driven mobile healthcare ("mHealth") trends invigorated globally by the COVID-19 pandemic, the already-vibrant PERS industry was estimated by ReportLinker.com to post a 14.8% revenue growth spike in 2020, benefitting long-term from the converging telemedicine practices and Internet-of-Things ("IoT") communication technologies. The Company is currently preparing to launch its next-generation state-of-the-art iHelp MAX, a telehealth-ready



Key Statistics

Price 10/15/2021	0.011
52 Week High	0.10
52 Week Low	0.005
Avg. Vol (3month)(M)	15.6
Market Cap (Interday)(M)	9.8
Price/Sales	7.0
Common Shares Outstanding (M)	891.8
Float(M)	156
EPS(ttm)	-0.003

Source: Yahoo Finance / OTC Markets

Recent Highlights

October 6, 2021 - WHSI announced today that it has engaged Castle Placement as its exclusive placement agent to raise \$5 million to fund business development/growth for the pivotal product launch of the Company's iHelp MAX™ device. Peter Pizzino, the President of Wearable Health Solutions Inc. said: "The iHelp MAX product is the latest in mobile Personal Emergency Response Systems (mPERS), and the partnership between WHSI and Castle is designed to capitalize on the growing need for real-time location tracking, emergency alert services, and real-time wearable health remote monitoring technologies."

October 5, 2021 - The Company announced that it has engaged an internationally renowned R&D firm, MIDI Product Development Corporation (MIDI), an expert in medical innovation, to develop and commercialize a biometric sensor to communicate with the Company's new 4G iHelp MAX™ product platform, the iHelp Next Generation Platform (NGP).

August 17, 2021 - WHSI announced that it has acquired the assets of mHealthCentral.com and its technology, including the mHealth Central Cloud Management and Automation platform or BAAS technology dealer portal for use in its next generation iHelp MAX™ cellular and telehealth-ready mobile medical device.

The information presented herein is not to be construed as an offer to sell, nor a solicitation of an offer to purchase, any securities. This Profile report, is a compilation of information available to the public, which has been furnished by the featured company or gathered from other sources, in each case without independent verification, and no representations are made as to the accuracy or validity thereof. The information may include certain forward-looking statements within the meaning of Section 21E of the SEC Act of 1934, which may be affected by unforeseen circumstances or certain risks. Any investment in securities contains inherent high levels of risks and should only be done after consulting an investment professional. The featured company will pay a fee of \$4500 in cash to Alan Stone & Company LLC for preparation and distribution of this updated Corporate Profile, including other potential fees associated with various consulting and investor relation services. For complete disclaimer information, the readers are hereby referred to the Disclaimer Page at the www.WallStreetResearch.org website.



Wearable Health Solutions, Inc.

Ticker: (OTC:WHSI)

Updated Corporate Profile

Page 2 of 10

as of October 16, 2021

Sector: Healthcare
Industry: Medical Instrumentswww.wearablehealthsolutions.com

4G cellular network device fully-integrated with the Company's proprietary mHealth Central Cloud Management and Automation platform, which will provide the capacity to connect to various body-mounted biological function sensors and other wearable equipment for remote monitoring, data collection and processing.

In order to fund its business development growth, the Company is conducting an equity placement of up to 500 million shares of Common Stock at \$0.01 per share, or \$5 million gross proceeds, pursuant to a Regulation A Offering Statement qualified and deemed effective by the Securities and Exchange Commission (SEC) in November 2020. The Company also has a Reg D Offering, for accredited investors, also at \$0.01 per share. The Company recently engaged Castle Placement as its exclusive placement agent for its Reg D Offering.

SAFETY AND MEDICAL ALERT PRODUCTS

Leveraging its established twelve-year history of setting PERS technology standards, WHSI designs and manufactures innovative personal medical alarm and safety alert devices used to summon help in the event of an emergency. The Company's hardware products are offered in conjunction with periodic subscription plans for live-operator response services provided around-the-clock by certified emergency medical technicians trained to immediately assess the situation and dispatch appropriate aid personnel, which has the potential to save lives, mitigate physical harm from the incident and limit other repercussions, such as expensive hospital stays.

As an alternative to residential care at nursing homes or other assisted living facilities, WHSI medical alarm solutions are used primarily by persons living alone, especially the elderly, often with chronic medical conditions or disabilities, as well as non-seniors with unpredictable pre-existing maladies, such as seizures or heart disorders. Through its Lone Worker Program developed since late 2019, the Company's PERS devices can also be used by remote solitary employees and contractors in a variety of industries, including truck drivers, hotel maids, social and other field workers, especially those exposed to hazardous conditions. Several states and countries are now requiring companies with lone workers to implement a lone worker device into their business.

MediPendant®

The Company's original product called the MediPendant® is a traditional medical alarm for at-home emergencies.

Consisting of a base station connected to conventional land line phone services and a portable one-touch panic button unit equipped with a speaker and a microphone, MediPendant® was introduced in 2008 as the world's first wireless two-way voice communication pendant in the PERS industry. While a significant portion of personal medical alarms on the market still require the user to speak and listen through a stationary base component, the Company's system allows the user to talk to an operator directly through the wireless pendant, improving patient management procedures and response results upon an immobilizing emergency event. The system also automatically provides subscriber's personal information, such as home address and medical history, including an updated list of medications, which can be instantly conveyed to emergency responders. With an impressive top-quality radio transmission range of up to 600 feet, surpassing the capabilities of most competitive home-based PERS products, the water-resistant MediPendant® can be used throughout the household worn comfortably on a neck lanyard, a wrist strap or a belt clip, even in a bath or shower, where most accidents happen. The Company continues to sell the MediPendant® solution, but currently does not manufacture new devices, fulfilling dealers' inventory needs with recycled refurbished products. For more MediPendant® details, visit www.MediPendant.com.

**Wearable Health Solutions Products**

iHelp™

The Company's next-generation product line called iHelp™ is a fully mobile PERS (solution operating on cellular networks used by telecom providers worldwide. Having discontinued production of its initial iHelp™ version for 2G networks in 2016, the Company currently sells iHelp+ 3G™, an advanced easy-to-use, compact, lightweight, durable safety and medical alert device for indoor and outdoor applica-

The information presented herein is not to be construed as an offer to sell, nor a solicitation of an offer to purchase, any securities. This Profile report, is a compilation of information available to the public, which has been furnished by the featured company or gathered from other sources, in each case without independent verification, and no representations are made as to the accuracy or validity thereof. The information may include certain forward-looking statements within the meaning of Section 21E of the SEC Act of 1934, which may be affected by unforeseen circumstances or certain risks. Any investment in securities contains inherent high levels of risks and should only be done after consulting an investment professional. The featured company will pay a fee of \$4500 in cash to Alan Stone & Company LLC for preparation and distribution of this updated Corporate Profile, including other potential fees associated with various consulting and investor relation services. For complete disclaimer information, the readers are hereby referred to the Disclaimer Page at the www.WallStreetResearch.org website.



Wearable Health Solutions, Inc.

Ticker: (OTC:WHSI)

Updated Corporate Profile

Page 3 of 10

as of October 16, 2021

Sector: Healthcare
Industry: Medical Instrumentswww.wearablehealthsolutions.com

tions. iHelp+ 3G™ innovations over the predecessor products focus on real-time location tracking and customizable geo-fencing features based on GPS technology, as well as motion and positioning sensors for fall detection. The device is operated by one multi-function button allowing for more complex check-in and alert functions. Weighing 1.5 ounces and measuring 2.5"x1.8"x0.67", iHelp+ 3G™ also offers an extended battery life of 72 hours supervised by the monitoring center, superior quality audio system for loud and clear two-way operator connection, device-status voice prompts and audible alerts, as well as an IPX7 water-resistance rating, making the unit practically waterproof for immersions of less than 3.3 feet deep for up to 30 minutes.

The operation of the iHelp™ product series is coordinated by a proprietary cloud-hosted software-as-a-service platform automating and integrating back-end data transmission and processing, as well as application programming interface controllers between the user devices, monitoring centers and other third-party providers. The platform includes a front-end online dealer portal for direct management and customization of user accounts and devices, monitoring features and cellular network settings. Through an intuitive and seamless interface, dealers have control over fulfillment, activation and simple configuration of the iHelp™ unit or its functions at any time, as well as access to device usage tracking for audits and various reporting. For more information about the iHelp+ 3G™ system, visit www.ihelpalarm.com.

In advance of a gradual phase-out of 3G network bandwidths planned by major wireless network carriers, including AT&T, T-Mobile and Bell Canada, commonly referred to as the 3G Sunset, the Company is getting ready to release the iHelp MAX 4G™, its most advanced telehealth-ready device expected to transform the Company's medical alarm offering into fully-fledged wearable health monitoring and alert systems. Like the iHelp+3G™, the iHelp MAX 4G™ will operate on a cellular signal and offer emergency response services, but its functionality will be greatly enhanced by Wi-Fi and Bluetooth 4.0 Low Energy, as well as other connectivity standards utilized by the emerging IOT applications, such as Near-Field Communication or beacons.

Along with an upgraded mHealth Central Cloud Management and Automation platform, the system will have the capacity to integrate with a wide variety of third-party wearable healthcare products that monitor and transmit real-time and historical biological data. Collected and processed vital signs data can be stored on the Company's HIPAA (Health Insurance Portability and Accountability Act) compliant servers in the cloud and be available for authorized access by caregivers, nurses, doctors, hospitals, and other health organizations. The iHelp MAX™ will build on the company's existing devices and expertise to build a product with dramatically improved connectivity and functionality. The launch of the iHelp MAX™ is currently anticipated in early 2022.

On August 17th, 2021, the Company announced that it has acquired the assets of mHealthCentral.com and its technology, most notably the mHealth Central Cloud Management and Automation Platform or BAAS technology portal for use with the new iHelp MAX. The platform is a cloud-hosted service that has the ability to accept data from the Company's devices and retransmit the data to the appropriate parties in the user ecosystem, like monitoring centers, healthcare providers, or API controllers. The front-end portal interface provides a user-friendly monitoring and management platform for the various back-end integrations and will also allow for device fulfillment, tracking, controlling, and remote programming.

Some of the back-end automation and integration with third party providers and services will include SMS, email, and smartphone messaging app push notifications for device alerts, programmatic voice dialing and routing, integration with SIM card providers for management of airtime, integration with customer CRM for account details and activity, integration with billing systems for ordering and recurring billing, and other features.

In addition to the acquisition of assets and technology, Mr. Antony Chetta, the founder and designer of the mHealth Central dealer portal, will stay on as the Chief Technology Advisor for the Company and will ensure effective integration of the iHelp MAX™ into the mHealth platform.

The information presented herein is not to be construed as an offer to sell, nor a solicitation of an offer to purchase, any securities. This Profile report, is a compilation of information available to the public, which has been furnished by the featured company or gathered from other sources, in each case without independent verification, and no representations are made as to the accuracy or validity thereof. The information may include certain forward-looking statements within the meaning of Section 21E of the SEC Act of 1934, which may be affected by unforeseen circumstances or certain risks. Any investment in securities contains inherent high levels of risks and should only be done after consulting an investment professional. The featured company will pay a fee of \$4500 in cash to Alan Stone & Company LLC for preparation and distribution of this updated Corporate Profile, including other potential fees associated with various consulting and investor relation services. For complete disclaimer information, the readers are hereby referred to the Disclaimer Page at the www.WallStreetResearch.org website.



Wearable Health Solutions, Inc.

Ticker: (OTC:WHSI)

Updated Corporate Profile

Page 4 of 10

as of October 16, 2021

Sector: Healthcare
Industry: Medical Instruments

www.wearablehealthsolutions.com

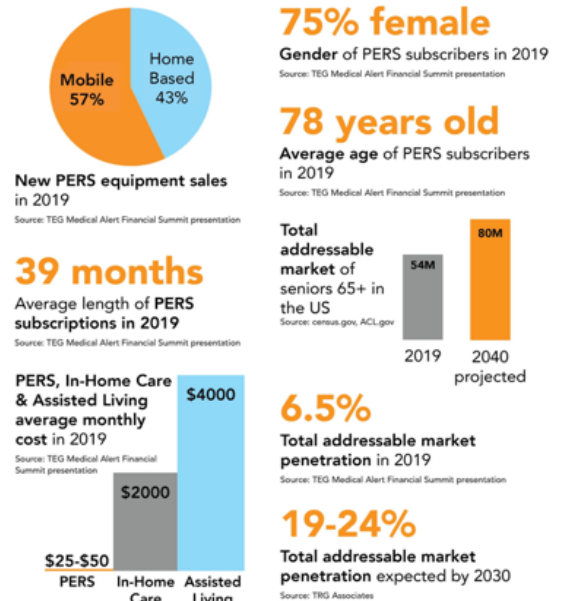
On October 5, 2021, the Company announced that they engaged MIDI Product Development Corporation (MIDI) to develop a biometric sensor to communicate with the new iHelp MAX™ platform. MIDI is a renowned FDA And ISO compliant medical device development consulting firm. MIDI's current mission is to develop the Next Generation Platform (NGP) that will add health monitoring and medication reminders to the existing safety monitoring capability. According to Peter Pizzino, the President of Wearable Health Solutions Inc., the partnership will allow the Company to release several wearable technologies and launch the iHelp MAX™ that will enable remote monitoring and data collection of essential vital signs in real-time.

MARKET

Originating well over four decades ago in the U.S. as a cost-effective technology-driven alternative to elderly care services in residential and hospital environments, PERS solutions flourished over the years due to accelerating innovation, persistent population aging, and growing incidence of acute and chronic diseases across the globe, especially in industrialized nations, where socio-economic dynamics favored independent living arrangements over multi-generational households. Currently, the industry has entered into a robust transformation period based on converging mHealth technology advancements and post-WW2 demographics yielding unprecedented geriatric population growth, both domestically and internationally.

In the U.S., as Baby Boomers born between 1946 and 1964 began reaching senior age in 2011, the Census Bureau's "2019 Population Estimates" released last year pegged the 65-and-older population to have grown abruptly by over a third (34.2%) during the last decade, reaching over 54 million individuals, and representing about 16.5% of the nation's inhabitants, per statista.com analysis. Both the number of 65+ seniors and their share in the population are on track to continue the steep rise in the upcoming decade, expected to surpass 70 million residents and represent over 20% of total population by 2030, a level already faced by four states (Maine, Florida, West Virginia

PERS MARKET HIGHLIGHTS Source: freeus.com





Wearable Health Solutions, Inc.

Ticker: (OTC:WHSI)

Updated Corporate Profile

Page 5 of 10

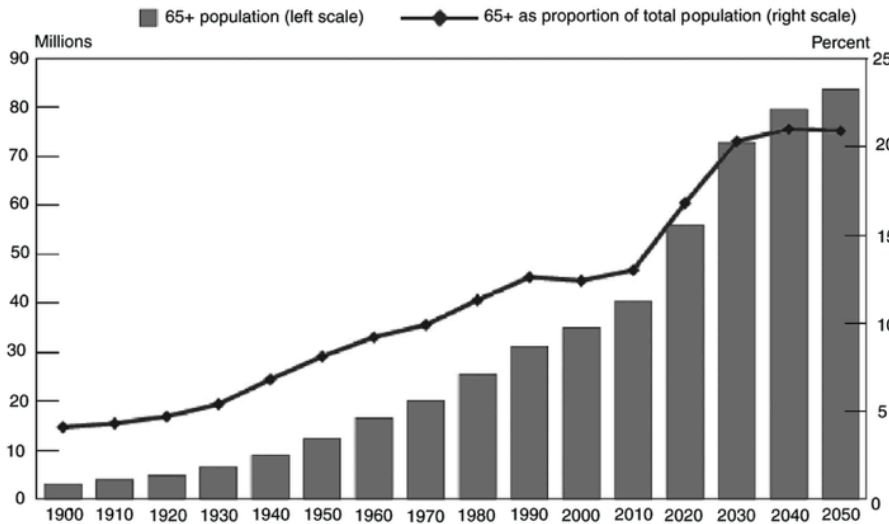
as of October 16, 2021

Sector: Healthcare
Industry: Medical Instruments

www.wearablehealthsolutions.com

UNITED STATES AGING POPULATION (1900-2050)

Source: U.S. Census Bureau (2014)



and Vermont) in 2019, as well as many European countries and Japan for a number of years.

Worldwide, according to United Nations Department of Economic and Social Affairs “World Population Ageing 2020 Highlights”, the population of persons 65 and over, which reached 727 million (9.3% share) is projected to more than double to 1.5 billion (16% share), trailing the trends of developed regions and providing natural PERS demand impetus for decades into the future.

Depending on the source of market data and methodology employed by major online research providers, the PERS industry in 2020 was valued between \$3.88 and \$7.14 billion worldwide and expected to growth at a CAGR ranging from 5.3% to 7.9%. Projections for global PERS market opportunity vary rather widely, likely due to forecasting uncertainties related to disruptive IoT and biosensor technology applications, as

well as impact of COVID-19 on telehealth practices. On a conservative side, ReportLinker in July 2020 revised its pre-pandemic “Global Personal Emergency Response Systems Industry” analysis released in March 2020, upgrading the projected worldwide PERS market value to \$6.3 billion by 2027 and forecast-period CAGR to 6.1%, with an annual growth rate anomaly figure of 14.8% expected in 2020. Recognizing the extraordinary COVID-19 boost to telemedicine adoption, the ReportLinker study cited only 35% of physicians utilized telemedicine technologies in their practice in 2019, which increased abruptly due to Centers for Disease Control and Prevention (CDC) urging virtual patient communication, as well as policy led decisions and regulatory amendments expanding telehealth consultations to nearly 62 million Medicare beneficiaries, temporarily lifting certain penalties for HIPAA violations and allowing reductions or waivers of deductibles. With the opportunity for providing sensitive, low-cost, rapid, connected diagnostics through mHealth-enabled devices the mPERS segment alone is forecasted to reach \$5.7 billion in 2027, growing at 7.5% CAGR. For comparative projections from other leading research providers, refer to the Global PERS Market Forecast table.

GLOBAL PERSONAL EMERGENCY RESPONSE SYSTEM (PERS) MARKET FORECAST Source: WallStreetResearch

Research Report		Forecast Period	Market Size (billions)		CAGR
Date	Source		Beg Value	End Value	
Feb 2020	Market Data Forecast	2020-2025	\$3.88	\$5.05	5.3%
Feb 2020	MarketsandMarkets Research	2020-2025	\$6.50	\$9.60	7.9%
Dec 2020	Market Reports World	2020-2026	\$7.14	\$10.19	6.1%

COMPETITION

The PERS market is fragmented and highly competitive, comprised of numerous providers leading the industry since the period of first-generation products, as well as subsequent successful market entrants focused solely on mPERS solutions. The largest players in terms of disclosed subscription levels are:

- Philips Lifeline, a division of Koninklijke Philips NV (NYSE: PHG), a Dutch multinational electronics manufacturer, with over 750,000 active users, formed in 2006 following a \$750 million purchase of Lifeline Systems, Inc., an industry pioneering company established in 1974, which at the time of acquisition had approximately \$150 million in annual revenues and a predominantly North American subscriber base of nearly 470,000 seniors;
- GreatCall, founded in 2005, which was acquired with more than 900,000 subscribers by Best Buy Co., Inc. (NYSE: BBY) in 2018 for

The information presented herein is not to be construed as an offer to sell, nor a solicitation of an offer to purchase, any securities. This Profile report, is a compilation of information available to the public, which has been furnished by the featured company or gathered from other sources, in each case without independent verification, and no representations are made as to the accuracy or validity thereof. The information may include certain forward-looking statements within the meaning of Section 21E of the SEC Act of 1934, which may be affected by unforeseen circumstances or certain risks. Any investment in securities contains inherent high levels of risks and should only be done after consulting an investment professional. The featured company will pay a fee of \$4500 in cash to Alan Stone & Company LLC for preparation and distribution of this updated Corporate Profile, including other potential fees associated with various consulting and investor relation services. For complete disclaimer information, the readers are hereby referred to the Disclaimer Page at the www.WallStreetResearch.org website.



Wearable Health Solutions, Inc.

Ticker: (OTC:WHSI)

Updated Corporate Profile

Page 6 of 10

as of October 16, 2021

Sector: Healthcare
Industry: Medical Instruments

www.wearablehealthsolutions.com

\$800 million;

- Connect America, operating since 1977, which acquired Tunstall Americas, a division of Tunstall Healthcare Group Limited in 2019, bringing the number of active users to more than 300,000.

Other companies with well-established operating histories and market positions, but undisclosed subscriberships include independent private providers, such as Life Alert Emergency Response, VRI, Healthcom, LifeFone, LifeStation, Numera, ADT, Medical Guardian, Bay Alarm Medical, LogicMark and MobileHelp. Competing directly with all aforementioned, **WHSI appears to be the only small cap publicly traded pure-play in the PERS industry.** Many of the above mentioned companies sell directly to end users, but Wearable Health Solutions' business plan is different in that they primarily are selling to dealers, which not only creates recurring revenue, but also calls for substantially less customer service calls/overhead. Competitive advantages for the Company are: (1) Wearable's custom portal is proprietary software designed for use exclusively with iHelp products and customized for iHelp dealers. It enables its dealers and users to program their devices in the cloud at a moment's notice, including enabling wifi, fall detection, geo-fencing, language, gps, and lone worker, (2) Wearable distances itself from its competition by writing its own programs and customizing its software to fit its dealer's needs, (3) Wearable is the only company that has implemented a lone worker program that uses wifi and beacons, helping to pinpoint workers locations not only by gps, but by floor also, (4) Wearable is already testing disposable wearable health sensors that can be worn on the body, and can save historical data on HIPAA compliant servers in the cloud for use by doctors, hospitals, and loved ones

BOAPIN TECHNOLOGY ACQUISITION

In August 2020, the Company entered into an agreement to purchase the e-commerce technology platform BOAPIN.com from Hypersoft Ventures, Inc. As a part of the asset purchase agreement, WHSI issued 6,700,000 shares of Series C Convertible Preferred Stock, which are convertible into 10 shares of Common Stock each, and a two year interest bearing promissory note in the amount of \$425,000, in exchange for 100% of the trading platform and all other assets pertaining to BOAPIN.com.

BOAPIN is a technology platform designed to support the import and export trade sector by delivering innovative B2B solutions that incorporate technologies such as big data analytics, blockchain, artificial intelligence, and smart contract. The goal of this B2B cross border e-commerce platform is to grow global trade by shortening the trade cycle and increasing efficiencies. Blockchain allows for improvements like tracking of goods from origin to end consumer and acceleration of product certification & assurance. The platform also offers banking and finance solutions and facilitates international payments in multiple currencies. BOAPIN allows trading partners to use smart contracts, which are contracts stored across a blockchain network with the terms of the agreement written into lines of code that will self-execute the transactions associated with the given contract, and can therefore promote trust while speeding up clearing and settlement through automation. Companies can set up their own e-commerce stores through the platform, send and receive quotes, negotiate, use advanced reports, access sales management systems, and much more. BOAPIN.com was initially designed and marketed to promote trade between Brazil and China and is mainly focused on commodities trading. Key industries include agriculture, building materials, electronics, fertilizers, machinery & equipment, and wines & spirits. Recently, the Company has decided to focus on its core business and is looking to sell all assets related to BOAPIN.com.



Wearable Health Solutions, Inc.

Ticker: (OTC:WHSI)

Updated Corporate Profile

Page 7 of 10

as of October 16, 2021

Sector: Healthcare
Industry: Medical Instrumentswww.wearablehealthsolutions.com

MANAGEMENT

The Company's seasoned management team has over 30 years of combined PERS industry experience and a track record in executive management of publicly traded microcap companies.

Harrysen Mittler, CEO and Chairman, has over 30 years of experience in corporate finance, mergers and acquisitions, business administration and commerce. Prior to joining the Company in December 2019, Mr. Mittler served as Chairman, CEO and CFO of Pacific Software Inc. (OTC: PFSF), an enterprise software development and acquisition company for emerging technologies, since 2016. Previously, he served as Director and CFO of Nortia Capital Partners Inc., a then publicly traded merchant banking company, Chairman and CEO for Grand Prix Sports Inc., an international motor sports racing team, as well as for Autoworks International Ltd., a company then quoted on the Frankfurt Stock Exchange. At the beginning of his career, Mr. Mittler has also served in the audit division of Deloitte Haskins and Sells, the predecessor to Deloitte & Touche LLP.

Peter Pizzino, President and Director, had a 25-year career in the securities and investment industry when joining the Company in December 2019. Since 2018, Mr. Pizzino served as President of Pacific Software Inc. (OTC: PFSF), where he focused on development of BOAPIN.com. Prior to that, since 2015, Mr. Pizzino held positions in Capital Markets at Spartan Capital, then with J. Streicher Capital on the NYSE floor, where he financed public and private companies generating several hundred million dollars in client offerings. In the past, Mr. Pizzino acquired extensive international business and non-profit experience, including guiding business development and financing of emerging companies based in China. Mr. Pizzino received a B.S. degree in accounting and finance, and held several securities licenses.

Ronald Adams, EVP, has over 40 years of experience in wholesale, retail, and distribution organizations, as well as starting growing profitable companies, including founding Medical Alarm Concepts, beginning in 2008. Before that, he served as President of Connective Home, an installer of low voltage wiring for Smart Homes from 2001-2008. Previous to this, he served as the President and CFO of a NASDAQ company, which he started and later sold. Mr. Adams graduated from the U.S. Merchant Marine Academy at Kings Point with a B.S. in Engineering and as a Lieutenant JG in the U.S. Navy. In 1996, Mr. Adams received the prestigious Entrepreneur of the Year Award, sponsored by Dow Jones, NASDAQ, and Ernst & Young.

Jennifer Loria, COO, has over 20 years of experience developing and executing strategic business plans, establishing and streamlining internal operations, and developing growth strategies for startup companies. Having joined the Company in December 2008 as VP of Marketing for Medical Alarm Concepts LLC, Ms. Loria was responsible for brand development and execution of go-to-market strategies. Prior to joining the Company, Ms. Loria worked at Buck, a global HR benefits and human resource consulting firm controlled by H.I.G. Capital. Ms. Loria holds a master's degree in journalism and a bachelor's degree in business administration.

Gail Rosenthal, CFO, has over twenty years of experience in corporate finance, mergers and acquisitions, accounting and auditing. Prior to joining the Company in September 2020, Ms. Rosenthal has served as senior audit manager for a boutique auditing firm until 2010, and has subsequently concentrated on private consulting work. Her experience spans manufacturing, distribution and retail, film production, banking and finance, IT and software development, and she is an expert in communications and leadership. Ms. Rosenthal is a graduate of University of California San Diego in La Jolla, CA.

FINANCIALS

WHSI generates revenues from sale of its devices, primarily the iHelp+ 3G™, as well as monitoring and other associated services, resulting in a current annual revenue run rate of approximately \$1.4 million.



Wearable Health Solutions, Inc.

Ticker: (OTC:WHSI)

Updated Corporate Profile

Page 8 of 10

as of October 16, 2021

Sector: Healthcare
Industry: Medical Instruments

www.wearablehealthsolutions.com

For the most recent fiscal year ended June 30, 2021, the Company's Total Revenue was \$1,394,000 vs. \$1,163,000 for the prior year, representing a growth rate of approximately 20 percent. The Gross Profit was \$620,945 in fiscal 2021, or 44.5%, vs. \$689,636 or 59.2% in the prior year. For the year ended June 30, 2021, the Company reported a Loss from Operations of (\$1,350,734) and a Net Loss of (\$1,908,437), compared to (\$577,126) and (\$1,266,977) for the prior year. The Company incurred much higher level of operating expenses in light of its expansion plans and gearing up for the roll-out of the new line of 4G products.

In November 2020, the SEC issued a Notice of Qualification for the Company's Offering Statement filed pursuant to Regulation A. The Company is currently offering on a "best efforts" basis up to 500,000,000 shares of WHSI Common Stock, at a price of \$0.01 per share, for maximum gross proceeds of \$5,000,000, prior to offering expenses, including discounts and commissions of up to 10%. Having reported the first placement of 8,000,000 fully-registered shares in February 2021, the Company plans to continue the offering directly and through online crowd funding platforms. The net proceeds will be utilized predominantly for manufacturing and marketing expenses in preparation of the iHelp MAX 4G™ roll-out, IT research and development, repayment of certain promissory notes and other debt reductions, as well as other working capital needs for ongoing operations.

As of June 30, 2021, the Company had 891,843,000 outstanding shares of Common Stock, and five classes of Preferred Convertible Stock, outstanding as follows:

- 688 Series A shares, with no voting rights, convertible at 1 share of Series A for 2 shares of Common Stock;
- 9,938 Series B shares, with no voting rights, convertible at 1 share of Series B for 2 shares of Common Stock;
- 6,838,889 Series C shares, with no voting rights, convertible at 1 share of Series C for 10 shares of Common Stock, of which 6,700,003 were issued in August 2020 in association with the Hypersoft Ventures transaction;
- 425,000 Series D shares, with no voting rights, convertible at 1 share of Series D for 10 shares of Common Stock;
- 1,900,000 Series E shares, carrying voting rights of 10,000 votes per share, convertible at 1 share of Series E for 100 shares of Common Stock, 900,000 shares of which was issued in November 2020, with the entire outstanding balance held by the Company's directors as controlling interest in WHSI.

OUTLOOK

Facing highly conducive market conditions triggered in part by the COVID-19 pandemic, the Company is on the verge of executing a pivotal product launch of its iHelp MAX 4G™ device designed specifically to capitalize on latest mPERS real-time location-tracking features and emerging wearable health monitoring technologies. The multifaceted multilingual iHelp MAX 4G™ along with the versatile mHealth Central Cloud Management and Automation platform will offer a simple easily-customizable turn-key solution with a greatly enhanced marketability profile, marking an unprecedented opportunity for more extensive North American market penetration, where the Company's subscribers are currently concentrated and intensified global expansion beyond presently served regions, especially in less developed countries, where life expectancy levels keep rising, fertility rates continue falling and technology adoption increases consistently. As social isolation standards and independent remote work practices become increasingly and even perennially accepted worldwide, the iHelp MAX 4G™ solution will be marketed for two distinct applications targeting separate global markets, namely: (1) medical emergency and health condition trackers for vulnerable segments of the aging and medically-at-risk populations, and (2) occupational safety and employee performance alerts for lone workers in a variety of industries.

As such, the introduction of iHelp MAX 4G™ is expected to provide a significant upsurge in revenues from new product sales and upsell opportunities, as well as increased levels of general monitoring, premium data and other optional high-margin services. The Reg-A and Reg-D offerings, if successful, will also significantly improve the Company's financial standing and improve its balance sheet.



Wearable Health Solutions, Inc.

Ticker: (OTC:WHSI)

Updated Corporate Profile

Page 9 of 10

as of October 16, 2021

Sector: Healthcare
Industry: Medical Instruments

www.wearablehealthsolutions.com

The Company plans to sell the iHelp MAX 4G™ solution wholesale through its dealer network, which it intends to expand to include healthcare companies, including hospitals, insurance providers and managed care organizations. The management claims to currently be in discussions with several wholesale groups looking to distribute its products through their own independent channels and in conjunction with their own monitoring services. The Company is also developing a program designed for specific retailers, for sale of WHSI branded and white label products. Finally, the Company anticipates to recruit one or two sales and customer service experts, adding to its current count of 10 full-time employees.

Provided that the management can secure additional financing and execute its product roll-out strategy, the Company appears poised to experience unparalleled revenue growth over the next 12 to 24 months following the iHelp MAX 4G™ launch. This could potentially return the Company to profitability when profit margins improve from the current levels. The Company anticipates significant revenue growth in the near future.

Corporate Contact Information

Wearable Health Solutions - WHSI

Harrysen Mittler - Chairman of the board and CEO

Peter Pizzino - President and Director

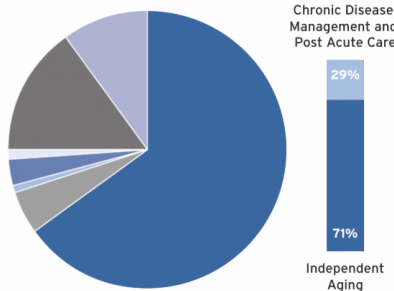
Tel (877) 342-2929

info@wearablehealthsolutions.com

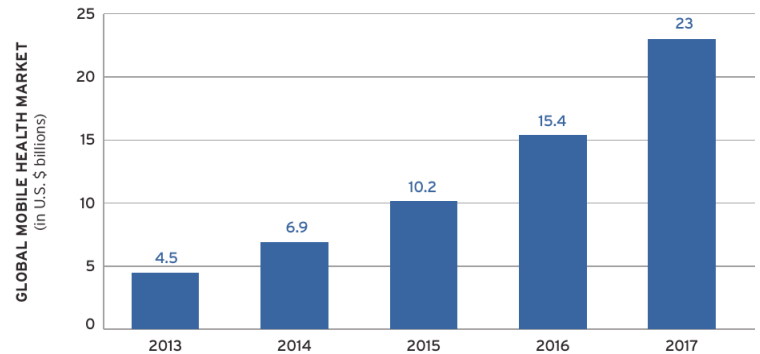
200 West Church Road, Suite B, King of Prussia, PA 19406

Global mHealth Market Opportunity by Service Categories, US\$ billion, 2017

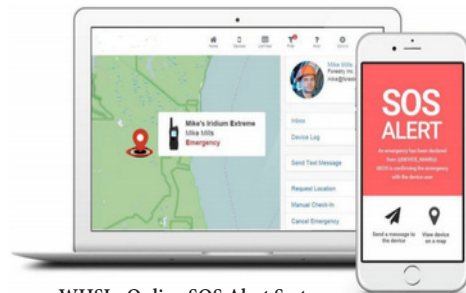
Monitoring	\$15 billion	65%
Emergency Response	\$0	0%
Health Practitioner Support	\$1.1 billion	5%
Health Surveillance Support	\$0.1 billion	0%
Administration	\$0.1 billion	1%
Wellness	\$0.7 billion	3%
Prevention	\$0.2 billion	1%
Diagnosis	\$3.4 billion	15%
Treatment	\$2.3 billion	10%



Global mHealth Market



Note: Total worldwide market size (2017E): US\$ 23 billion
Source: PwC analysis



WHSI - Online SOS Alert System



All figures below are quoted in US Dollars and in Thousands

Income Statement	FY 6/30/19	FY 6/30/20	FY 6/30/21	Balance Sheet	FY 6/30/19	FY 6/30/20	as of 6/30/21	Cash Flow Statement	FY 6/30/19	FY 6/30/20	FY 6/30/21
Revenue	\$ 770	1,163	1,394	Current Assets	\$ 112	212	974	Operating Cash Flow	(132)	(386)	(1,537)
Oper Loss/income	\$ (435)	(577)	(1,350)	Total Assets	\$ 118	212	974	Investing Cash Flow	-	-	-
Net Loss/Income	\$ (715)	(1,266)	(1,908)	Total Liabilities	\$ 2,324	3,702	4,474	Financing Cash Flow	132	382	2,384
Loss Per Share	\$ (0.01)	(.003)	(.003)	Total Shareholder's Equity	\$ (2,205)	(3,490)	(3,500)	Cash at end of period	4	0	847

The information presented herein is not to be construed as an offer to sell, nor a solicitation of an offer to purchase, any securities. This Profile report, is a compilation of information available to the public, which has been furnished by the featured company or gathered from other sources, in each case without independent verification, and no representations are made as to the accuracy or validity thereof. The information may include certain forward-looking statements within the meaning of Section 21E of the SEC Act of 1934, which may be affected by unforeseen circumstances or certain risks. Any investment in securities contains inherent high levels of risks and should only be done after consulting an investment professional. The featured company will pay a fee of \$4500 in cash to Alan Stone & Company LLC for preparation and distribution of this updated Corporate Profile, including other potential fees associated with various consulting and investor relation services. For complete disclaimer information, the readers are hereby referred to the Disclaimer Page at the www.WallStreetResearch.org website.



Wearable Health Solutions, Inc.

Ticker: (OTC:WHSI)

Updated Corporate Profile

Page 10 of 10

as of October 16, 2021

Sector: Healthcare

Industry: Medical Instruments

www.wearablehealthsolutions.com

ADDITIONAL DISCLOSURES

Receipt of Compensation:

The featured company engaged ASC / Wall Street Research for an updated Profile Report and has paid a fee of \$4,500 in cash to Alan Stone & Company LLC for preparation and distribution of this updated Corporate Profile, including other potential fees associated with various consulting and investor relation services. Future fees will be due for updated reports and other services.

Ownership and Material Conflicts of Interest:

The author(s) of this report do **not** hold a financial interest in the securities of this company.

Position as an Officer or Director:

The author(s) does not act as an officer, director or advisory board member of the subject company.

Market making:

The author(s) does not act as a market maker in the subject company's securities.

Ratings Guide:

Banks or Investment Firms often rate companies as a BUY, HOLD or SELL. A BUY rating is often given when the security may deliver absolute returns of 15% or greater over the next 12 month period, and recommends that investors consider taking position assuming it meets their risk profile. A SELL rating is given when the security is expected to deliver negative returns over the next 12 months, while a HOLD rating implies flat returns over the next twelve months.

Disclaimer:

The information set forth herein has been obtained or derived from sources generally available to the public and believed by the author(s) to be reliable, but the author(s) does not make any representation or warranty, express or implied, as to its accuracy or completeness. The information is not intended to be used as the basis of any investment decisions by any person or entity. This information does not constitute investment advice, nor is it an offer or a solicitation of an offer to buy or sell any security. The information in this report may become outdated after a period of three months unless updated.

This Profile should not be considered to be a recommendation by any individual affiliated with Wallstreet Research, with regard to this company's stock and only states our valuation thesis, and speculative target price based upon public information and traditional metrics associated with valuations. There can be no assurance that any such outcomes will occur.

Readers should consider all risk factors as outlined in the featured Company's public filings.

